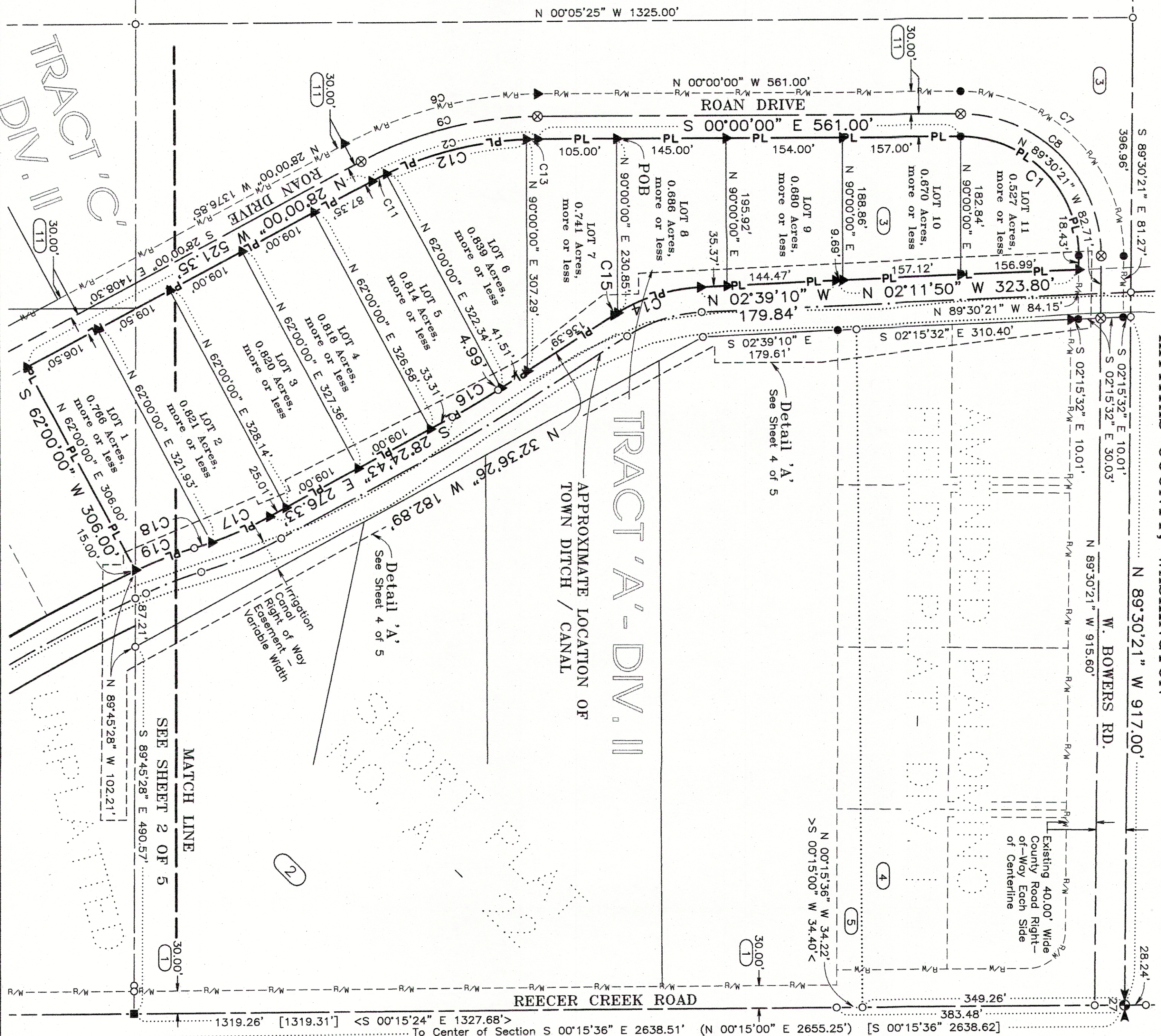


TRACT 'B' PALOMINO FIELDS PLAT - DIV. II



PALOMINO FIELDS PLAT - DIVISION III
 A REPLAT OF TRACT 'A', PALOMINO FIELDS PLAT - DIVISION II
 A PORTION OF THE S 1/2 OF THE NW 1/4 OF SECTION 27, TOWNSHIP 18 NORTH, RANGE 18 EAST, W.M.
 KITTITAS COUNTY, WASHINGTON

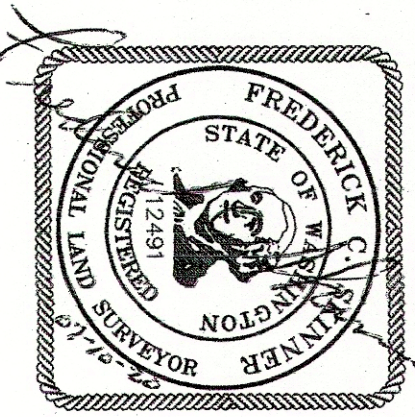
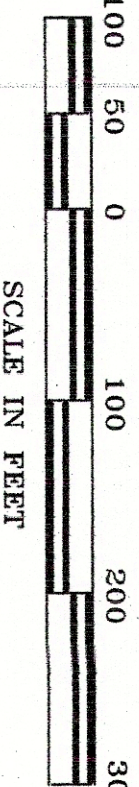


BASIS OF BEARINGS

The bearing for the East boundary line of the Northwest quarter of Section 27 equal Cruise & Nelson's bearing of South 00°15'36" East for the same line as shown on the FHA, U.S.D.A. property survey found under Kittitas County's Auditor File No. 199702200014

NOTICE

This is a Major Plat and as such is not intended to show, nor does it purport to show, all easements and encumbrances.



INSTRUMENT USED	INDEXING DATA
Trimble R10 GPS Receivers	527 T18N R18E
Traverse Closure Meets Standards Per WAC 532-130-090	

WESTERN PACIFIC ENGINEERING & SURVEY

A TERRA DEVELOPMENT SERVICES CORPORATION
 1328 E. Hunter Place, Moses Lake, Washington
 T:(509)765-1023 F:(509)765-1298
 Services in Washington and Idaho

LCU, INC.

Surveyed by LMH Scale 1" = 100'
 Drawn by Tml/FCS Sheet 3 of 5
 Checked by FCS Project No. 18146